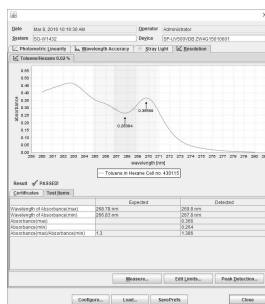




accurate multi-component analysis.

Dissolution Calculations

ARGUS/Dissolution has already built-in calculations that corrects for volume changes and mass loss. With this all-in-one approach, time consuming and error-prone transcription of data collected from various sources into spreadsheets will be a thing of the past.

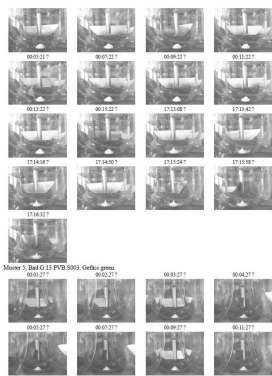


Forge Your Automatic Cleaning Program

ARGUS/Dissolution let you translate your experience with best cleaning procedures into a permanent program. Cleaning tubing and flowthrough cells of an online dissolution system with multiple baths is reliably accomplished with a simple click.

Video & Pictures

A picture tells a thousand words. Consequently ARGUS/Dissolution allows to use standard USB web cameras to take pictures during a dissolution test or to record a video. Pictures can be included in the report which can be a tremendous help during analytical development. Video monitoring on the other hand can help to understand the dissolution processes better especially for new formulations.



Enhanced Data Management

ARGUS/Dissolution manages all your data needs From instrument control to final reports, and makes your lab more productive. No matter what type of lab you are working in, you focus on science, not on data transcription or file management. The strength of ARGUS/ Dissolution is its

reliability.

- It collects and stores test results, automatically linking system configuration and method parameter with each dissolution test
- It connects data and any modification applied afterwards with the identity of the operator using the computer system
- It logs relevant events, errors or login failures

Future-Proof Technology

Built on industry standards, developed according regulations and guidance set forth in 21CFR Part11 and GAMP5, ARGUS/Dissolution is designed to be your versatile tool to manage your lab's dissolution test

workload while reducing your validation effort to a minimum. Whether you need to control a single bath or support dissolution workflows that span the entire laboratory and even offices, ARGUS/ Dissolution offers the right configuration for you. The database can run on a single workstation or on a server. You can easily add new clients to both and migrate from a standalone system to a dissolution laboratory network.

Drive the Equipment That You Need

ARGUS/Dissolution drives almost all dissolution equipment of any vendor on the market. You can choose your favorite baths, pumps, spectrometers and accessories and build the dissolution system you need or advance existing devices to automated systems at minimal cost.

Spectroscopy System

Designed for sample analysis by means of UV/Vis. Whether you withdraw your aliquots by hand or automatically with an offline system ARGUS/ Dissolution provides the appropriate counterpart to continue your dissolution test workflow with only a few clicks. Arrange sample sequences from various baths on your xyz-auto sampler for unattended analysis. Spectra are automatically linked to your analysis dataset with instant calculation of dissolution values.

Offline System

Designed for systems of one or more baths that do automated or manual sampling into vials for offline analysis by HPLC or UV/Vis. With ARGUS/Dissolution you can record stirrer speed, temperature, sampling, and other events required for accurate calculation of dissolution results. You can easily process raw data into a report and add analytical data when available.

Online UV/Vis System

For unattended withdrawal and analysis of samples which recently became indispensable whenever dissolution profiles are required or when the throughput of your bath should be high even during the night or on weekends.

Online HPLC System

For parallel sampling from one or more dissolution baths with subsequent sequential analysis of samples by HPLC. ARGUS/Dissolution transfers work lists or sample sets to the CDS, triggers the start of the chromatogram and imports peak lists or result sets to calculate dissolution profiles.

Fiber-Optic System

Designed for in-situ analysis in the vessel. ARGUS/ Dissolution copes with the challenges of multi-channel fiber optic measurement and allows data collection

rates limited only by the capabilities of the spectrometer.

Data Client

To review or recalculate dissolution tests from the office. It includes the powerful toolset that can be found in other configurations like profile comparison (f1,f2 calculation), intrinsic dissolution calculation, electronically signing and exporting into LIMS, text files or PDF.

Multiple Baths

Adding a second or a third bath to your dissolution system can be done with a minimum of fuss. Even if it is another make and model ARGUS/Dissolution will simply incorporate it into the new configuration and reliably detect sampling time collisions - before the pill drops.

Analyze Combination Drugs in One Effort

You wish to analyze two or more active ingredients in one drug without the cost and time overhead of HPLC analysis but with maximal convenience and automation? ARGUS/ Dissolution has the chemometric power. You have the choice between multilinear regression or even more sophisticated models like PLS created with the well-known CAMO The Unscrambler®. With the intuitive one-stop design of ARGUS/Dissolution handling of these calibration models is straightforward and as easy as applying common calibration types.

Usability

- Wizards for major functions
- Tooltips and context sensitive online help
- Document search capabilities
- Analysis template technology
- Emergency stop capability
- English and German user interface
- Detection of possible timing problems
- Real time dissolution profiles
- Customizable report templates
- "WYSIWYG" method- and analysis display
- Raw data export (Excel or JCAMP-DX)
- Power and lamp saving functions
- Programmable cleaning procedures

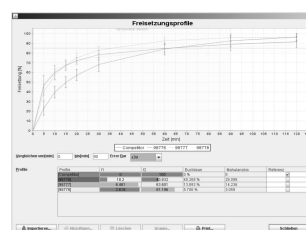


Analytical Capabilities

- Full spectrum support
- Peak picking on all spectra charts
- Savitzky-Golay second derivative
- Turbidity baseline
- Placebo effect elimination
- Single and Multi Component Analysis
- CAMO The Unscrambler model support
- Recalculation of analyses
- Statistics (pH, temperature, dissolution)
- Infinity test, temperature profile
- Automated media change
- Profile comparison (f1/f2)
- Intrinsic dissolution

USP and Pharm. Eur. Acceptance

- One or more Q-values for each API
- High/low dissolution boundaries
- USP S1, S2 and S3 testing in one record



Data Integrity and 21 CFR Part 11

- Instant recording of raw data
- Standard database backup and recovery procedures
- Long term persistence in XML
- Detailed audit trail for electronic records
- System log for tracking application events
- Electronic signature support
- Cryptographical record protection
- Role specific access to program functions
- IQ/OQ/PQ support with reminder function
- Built in system suitability check
- Failsafe technology for data recovery
- Full Spectrometer OQ (as outlined in USP38)

Features

- ARGUS/Dissolution controls your dissolution tester hardware. Data is acquired from all devices you use in your dissolution test setup, including bath, spectrometer and pump. Methods and analyses are retrieved from and stored to the documents database.
- Connect multiple dissolution test laboratories to one central database
- ARGUS/Dissolution can be used offline to query, review, approve, release and electronically sign methods and analyses.
- Use ARGUS/Dissolution to exchange data with your LIMS or enterprise document management system (EDMS).
- Query or browse methods, analyses and other data by using any standard webbrowser.
- ARGUS/Dissolution runs on a Java Virtual Machine which makes the application secure and extremely

stable as required in highly regulated GxP environments. With the ARGUS Software Deployment Server centralized deployment and version control is easily accomplished.

- If you are already running the standalone version of ARGUS/Dissolution migration to an enterprise version is always possible. All data (methods, analyses, ...) can easily be transferred.

Enterprise Integration

ARGUS/Dissolution is based on the reliable ARGUS platform which seamlessly integrates dissolution testing into your corporate environment, e.g. LIMS. Exchange methods and analyses between development and QC laboratories. ARGUS/Dissolution is compatible to your existing dissolution testers and also integrates additional hardware such as spectrophotometers. The client-server architecture of the ARGUS platform perfectly fits into your corporate network.

Groupware Functionality (Enterprise Edition)

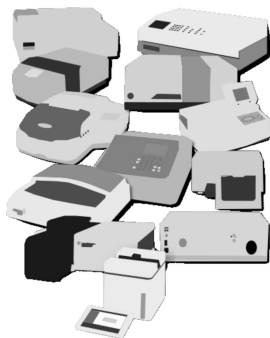
- Method deployment via shared database
- Centralized user account management
- LDAP authentication (ActiveDirectory)
- Prepared for LIMS connectivity
- Review Data through your web browser

Database Compatibility

- MariaDB
- MySQL
- Microsoft SQL Server
- Oracle

Spectrophotometer Driver

Agilent 8453,8454; AnalytikJena 200/205/210/250; Beckman DU800; Kontron Uvikon XL; Cecil 2000/3000/4000/ 7000/9000 series; PerkinElmer LAMBDA 2/20/25/35/45; PharmaTest SA500; Shimadzu UV1700 PharmaSpec, UV1800; Tec5 Multi-Spec; Thermo Evolution 300; Tidas II (9-channel fiber optic); Varian Cary50; Zeiss MCS5XX, MCS6XX(2-channel fiber optic); Agilent 8452A*; Beckman Du600*; Distek 2230A*, PerkinElmer L265,365,465* (*on demand)



Pump Driver

Hanson AutoPlus MAXIMIZER, Vision G2 AutoPlus; Hamilton Dynamix III; ISMATEC IPC/IPC-N; Sotax CY-750, CP7; Varian Vk806; Watson Marlow 323Du; Distek Evolution 4300; Solvias Micamix Dual Syringe

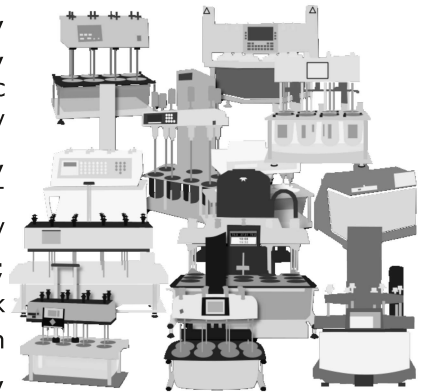
Dilutor

Autosampler & Fraction Collector & Valve Driver

Gilson 223 (Agilent G1811A), Hanson AutoPlus MultiFill, G2 AutoFill; PerkinElmer AS90, AS93plus, S10; Sotax C613/C615; Varian Vk8000; Distek Evolution 4300; Hamilton MVP, Rheodyne MX Series II Injector

Dissolution Tester Driver

Hanson SR8 Plus, Vision Elite & Classic 6, Vision G2 Elite & Classic 6 ; Pharma Test PTWS/IDS1000, PTDT8, PTWS1210,PTWS300,PTWS820; Sotax AT7/AT7smart, AT Xtend; Varian VK70XX; Distek 2100, 5100, Evolution series; ERWEKA DT800, DT700, DT720; Copley DT600, DT800



System Requirements

- 1 GB RAM recommended minimum
- 200 MB hard disk space recommended minimum
- Intel® Pentium® III or compatible at 800 MHz or better
- CD-ROM drive (only for installation)
- Monitor (1280x1024 or higher, 256 colors or better)
- Mouse or other pointing device
- RS232/Ethernet/USB (USB adapters can be used)
- Microsoft® Windows® XP, Vista, 7, 8, 8.1 or 10
- Adobe® Acrobat® Reader (to view manual), Microsoft® WinHelp (to view online help)

Need more information?

Contact:

galenicode

Galenicode GmbH
Schlossgasse 3b
79639 Grenzach-Wyhlen
Germany
www.galenicode.com
Tel. +49 7624 208 48 77
sales@galenicode.com